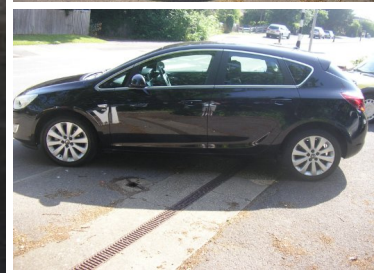




White Swan Car Centre

2010(10) Vauxhall Astra 1.6i 16V SE 5dr Auto

£4,295



Engine: Petrol
Body: Hatchback
Gearbox: Automatic
Capacity: 1598cc
Colour: Black
Mileage: 56,097
CO²: 167g/km
MPG: 39.8mpg
Top Speed: 113mph
BHP: 114bhp
Insurance Grp: 12E

White Swan Car Centre
 Dittons Road
 Polegate
 East Sussex, BN26 6JB

SERVICE HISTORY	17" ALLOYS
CHECK CONTROL SYSTEM	CRUISE CONTROL
MULTI FUNCTION TRIP COMPUTER	POWER STEERING
STEERING WHEEL MOUNTED AUDIO CONTROLS	SERVICE INTERVAL INDICATOR
CHROME BELTLINE	BODY COLOURED BUMPERS
FRONT AND REAR ELECTRIC WINDOWS	BODY COLOURED DOOR MIRRORS
12V POWER POINT FOR REAR PASSENGERS	ELECTRICALLY ADJUSTABLE AND HEATED DOOR MIRRORS
60/40 SPLIT REAR SEATS	FRONT FOG LAMPS
AMBIENT INTERIOR LIGHTING	REAR WIPER
CLOTH SEAT TRIM	3 SPOKE LEATHER SPORTS STEERING WHEEL
FLEX FLOOR MULTI-LEVEL ADJUSTABLE LOAD COMPARTMENT	ACTIVE HEAD RESTRAINTS
ILLUMINATED VANITY MIRRORS	CENTRE CONSOLE CUPHOLDERS, STORAGE TRAY AND ASHTRAY
REACH + RAKE ADJUSTABLE STEERING COLUMN	DRIVER'S SEAT HEIGHT ADJUSTER
	CENTRE ARMREST
	FRONT SEAT BACK STORAGE POCKETS
	ISOFIX SYSTEM ON OUTER REAR SEATS
	REAR HEADRESTS

Call:01323 488500 | www.whiteswancarcentre.co.uk